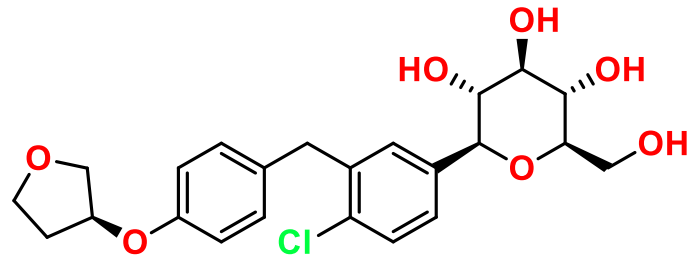


La molécule du mois - What molecule am I ?



Empagliflozin

Empagliflozin is an oral, highly selective inhibitor of sodium glucose cotransporter 2(SGLT2) for the treatment of type 2 diabetes. Empagliflozin was approved in the EU in May 2014 and is available in many countries marketed as Jardiance®

Empagliflozin is a drug of the gliflozin class, a new group of oral medications used for treating type 2 diabetes. SGLT2 is a protein in humans that facilitates glucose reabsorption in the kidney. Inhibitors of sodium glucose cotransporter 2 reduce rates of hyperglycemia in patients with type 2 diabetes by blocking renal glucose reabsorption in the kidney, thereby increasing urinary glucose excretion. Several trials demonstrated that empagliflozin used as an add-on to metformin therapy improves glycemic control with a low risk of hypoglycemia. In May 2015, a single-pill combination of Empagliflozin and Metformine was approved in Europe as Synjardy®.

Contribution : **David MONTAIR** December 2016