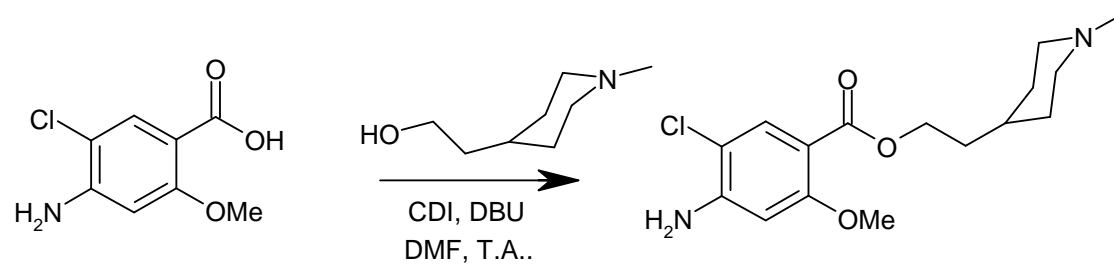
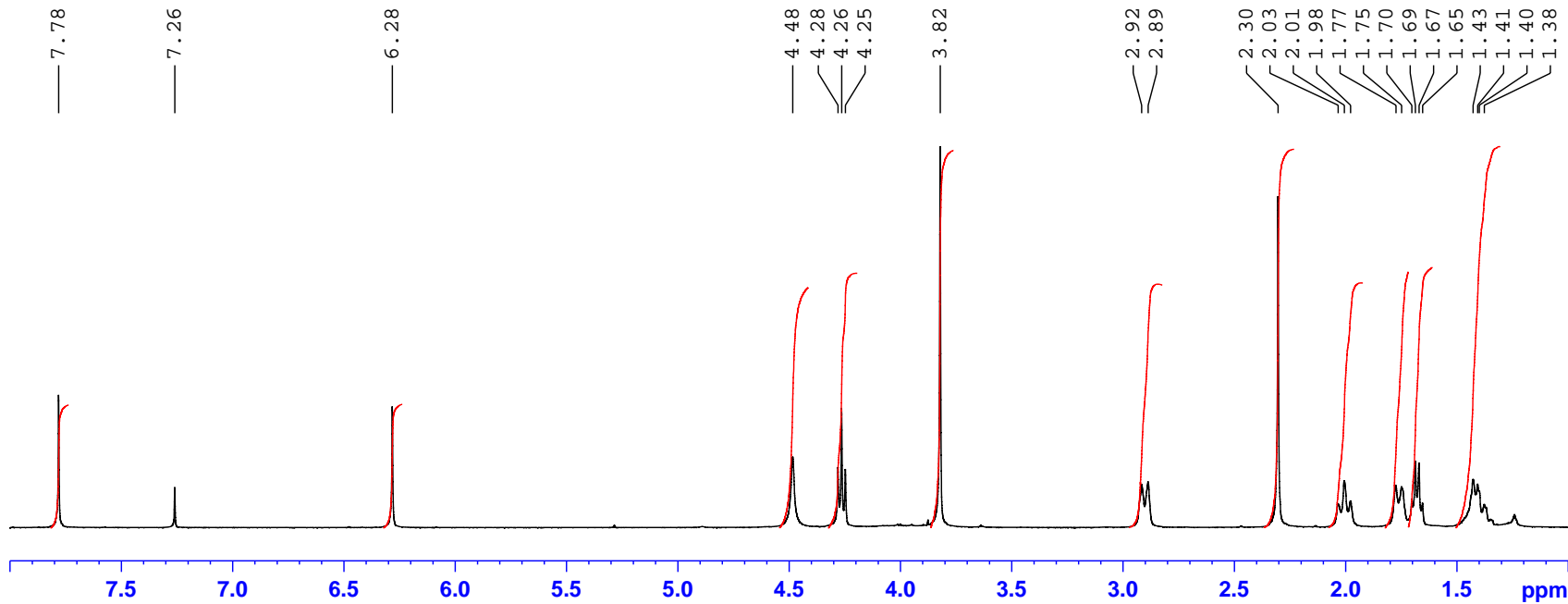


Schéma de synthèse JLS 2295



1. Vérifiez la structure de JLS 2295 ?



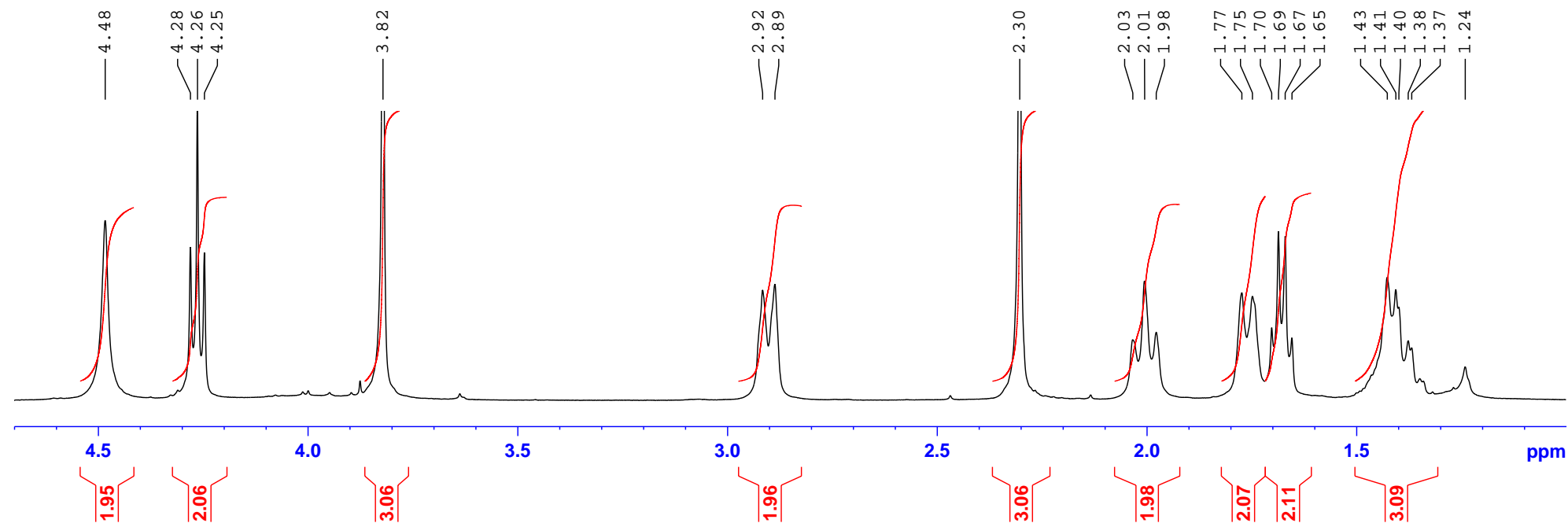
jls2295 PROTON

Current Data Parameters
 NAME jls2295
 EXPNO 10
 PROCNO 1

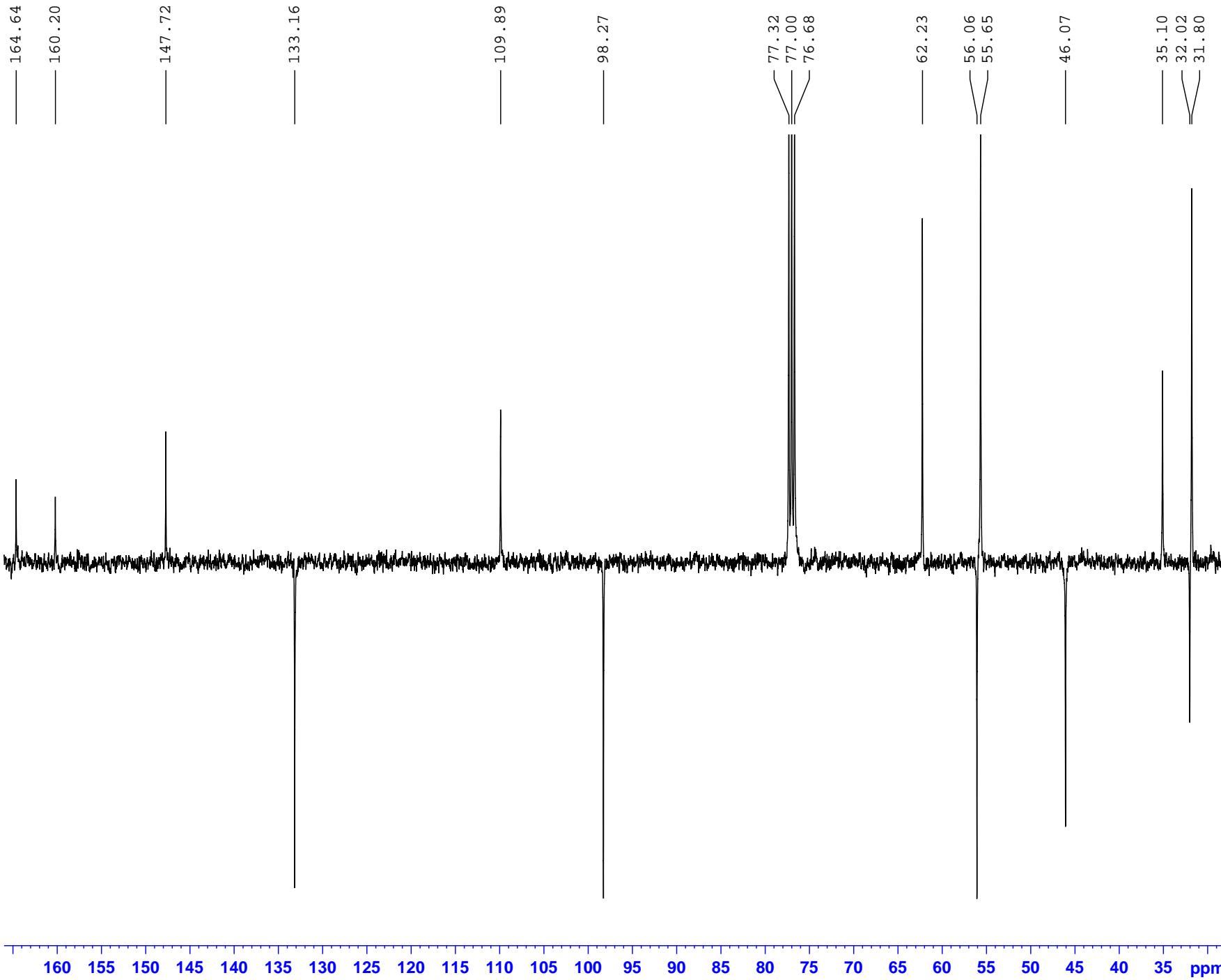
F2 - Acquisition Parameters
 Date_ 20070427
 Time 10.28
 INSTRUM spect
 PROBHD 5 mm BBI 1H-BB
 PULPROG zg30
 TD 65536
 SOLVENT CDCl3
 NS 16
 DS 2
 SWH 8250.825 Hz
 FIDRES 0.125898 Hz
 AQ 3.9715922 sec
 RG 101.6
 DW 60.600 usec
 DE 6.50 usec
 TE 300.0 K
 DI 5.00000000 sec

===== CHANNEL f1 =====
 NUC1 1H
 P1 6.20 usec
 PL1 -1.00 dB
 SFO1 400.1324710 MHz

F2 - Processing parameters
 SI 32768
 SF 400.1300094 MHz
 WDW EM
 SSB 0
 LB 0.30 Hz
 GB 0
 PC 1.00



Peak	$\nu(\text{F1})$ [ppm]	$\nu(\text{F1})$ [Hz]	Intensity
1	7.7813	3113.5316	5.24
2	7.2597	2904.8238	1.59
3	6.2824	2513.7768	4.78
4	4.4836	1794.0229	2.80
5	4.2804	1712.7165	2.39
6	4.2638	1706.0743	4.71
7	4.2471	1699.3922	2.32
8	3.8214	1529.0568	15.00
9	2.9163	1166.8991	1.72
10	2.8871	1155.2154	1.81
11	2.3035	921.6995	13.03
12	2.0339	813.8244	0.95
13	2.0057	802.5408	1.85
14	1.9779	791.4171	1.06
15	1.7739	709.7906	1.68
16	1.7486	699.6673	1.62
17	1.7026	681.2614	1.13
18	1.6865	674.8193	2.63
19	1.6705	668.4172	2.55
20	1.6544	661.9751	0.98
21	1.4273	571.1056	1.91
22	1.4068	562.9029	1.72
23	1.3995	559.9819	1.45
24	1.3772	551.0590	0.93
25	1.3689	547.7380	0.82
26	1.2413	496.6814	0.53



**jls2295
Jmod**

Current Data Parameters
 NAME jls2295
 EXPNO 15
 PROCNO 1

F2 - Acquisition Parameters
 Date_ 20070427
 Time 11.58
 INSTRUM spect
 PROBHD 5 mm BBI 1H-BB
 PULPROG jmod
 TD 65536
 SOLVENT CDCl3
 NS 6000
 DS 4
 SWH 23148.148 Hz
 FIDRES 0.353213 Hz
 AQ 1.4156492 sec
 RG 5792.6
 DW 21.600 usec
 DE 6.50 usec
 TE 300.0 K
 CNST2 145.0000000
 CNST11 1.0000000
 d1 5.0000000 sec
 d13 0.00000300 sec
 d20 0.00689655 sec
 DELTA 0.00001974 sec

===== CHANNEL f1 =====
 NUC1 13C
 P1 15.50 usec
 p2 31.00 usec
 PL1 -2.00 dB
 SFO1 100.6233483 MHz

===== CHANNEL f2 =====
 CPDPRG2 waltz16
 NUC2 1H
 PCPD2 100.00 usec
 PL2 0.00 dB
 PL12 23.10 dB
 SFO2 400.1316005 MHz

F2 - Processing parameters
 SI 32768
 SF 100.6127733 MHz
 WDW EM
 SSB 0
 LB 3.00 Hz
 GB 0
 PC 1.40

jls2295 HSQC

Current Data Parameters
 NAME jls2295
 EXPNO 12
 PROCNO 1

F2 - Acquisition Parameters
 Date_ 20070427
 Time 10.34
 INSTRUM spect
 PROBHD 5 mm BBI 1H-BB
 PULPROG invietgp
 TD 1024
 SOLVENT CDCl3
 NS 4
 DS 16
 SWH 3360.215 Hz
 FIDRES 3.281460 Hz
 AQ 0.1525700 sec
 RG 13004
 DW 148.800 usec
 DE 6.50 usec
 TE 300.0 K
 CNST2 145.0000000
 d0 0.00000300 sec
 D1 0.99487972 sec
 d4 0.00172414 sec
 d11 0.03000000 sec
 d13 0.00000400 sec
 D16 0.00010000 sec
 DELTA 0.00161840 sec
 DELTA1 0.00021614 sec
 INO 0.00003000 sec
 MCREST 0.00000000 sec
 MCWRK 0.19897595 sec
 ST1CNT 64

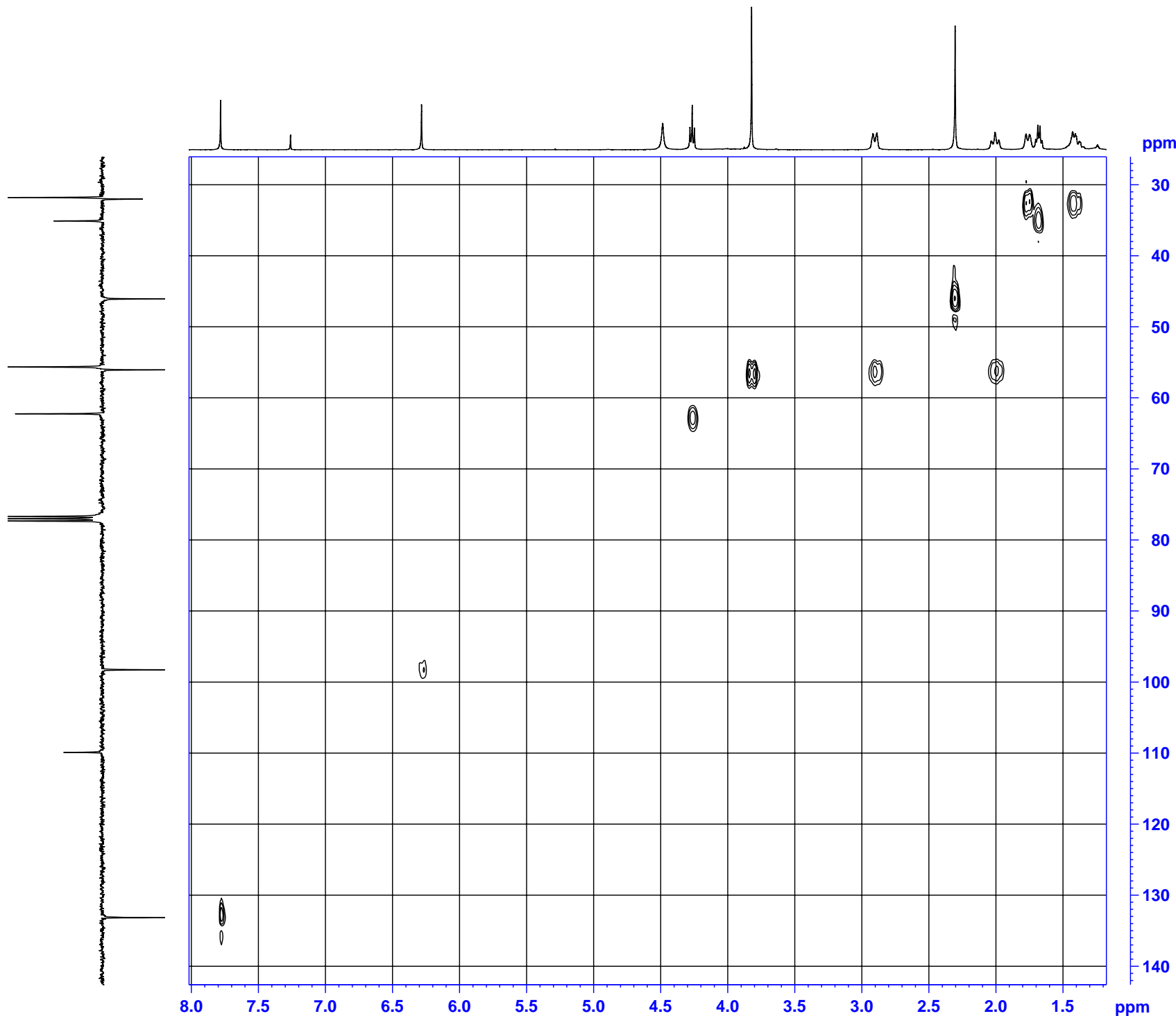
==== CHANNEL f1 =====
 NUC1 1H
 P1 6.20 usec
 P2 12.40 usec
 P28 1000.00 usec
 PL1 -1.00 dB
 SFO1 400.1317373 MHz

==== CHANNEL f2 =====
 CPDPRG2 garp
 NUC2 13C
 P3 12.00 usec
 P4 24.00 usec
 PCPD2 100.00 usec
 PL2 -4.00 dB
 PL12 14.42 dB
 SFO2 100.6202332 MHz

===== GRADIENT CHANNEL =====
 GPNAM1 SINE.100
 GPNAM2 SINE.100
 GPX1 0.00 %
 GPX2 0.00 %
 GPY1 0.00 %
 GPY2 0.00 %
 GPZ1 80.00 %
 GPZ2 20.10 %
 P16 1500.00 usec

F1 - Acquisition parameters
 ND0 2
 TD 128
 SFO1 100.6202 MHz
 FIDRES 130.208328 Hz
 SW 165.639 ppm
 FMODE Echo-Antiecho

F2 - Processing parameters
 SI 1024
 SF 400.1300094 MHz
 WDW QSINE
 SSB 2
 LB 0.00 Hz
 GB 0
 PC 1.40



jls2295 HMBC

Current Data Parameters
 NAME jls2295
 EXPNO 13
 PROCNO 1

F2 - Acquisition Parameters
 Date_ 20070427
 Time 10.45
 INSTRUM spect
 PROBHD 5 mm BBI 1H-BB
 PULPROG inv4gplprndqf
 TD 1024
 SOLVENT CDCl3
 NS 4
 DS 16
 SWH 3360.215 Hz
 FIDRES 3.281460 Hz
 AQ 0.1525700 sec
 RG 16384
 DW 148.800 usec
 DE 6.50 usec
 TE 300.0 K
 CNST2 145.0000000
 d0 0.00000300 sec
 D1 1.00122702 sec
 d2 0.00344828 sec
 D6 0.06500000 sec
 d13 0.00000400 sec
 D16 0.00010000 sec
 INO 0.00002160 sec
 MCREST 0.00000000 sec
 MCWRK 1.00122702 sec

===== CHANNEL f1 =====
 NUC1 1H
 P1 6.20 usec
 p2 12.40 usec
 PL1 -1.00 dB
 SFO1 400.1317373 MHz

===== CHANNEL f2 =====
 NUC2 13C
 P3 12.00 usec
 PL2 -4.00 dB
 SFO2 100.6237964 MHz

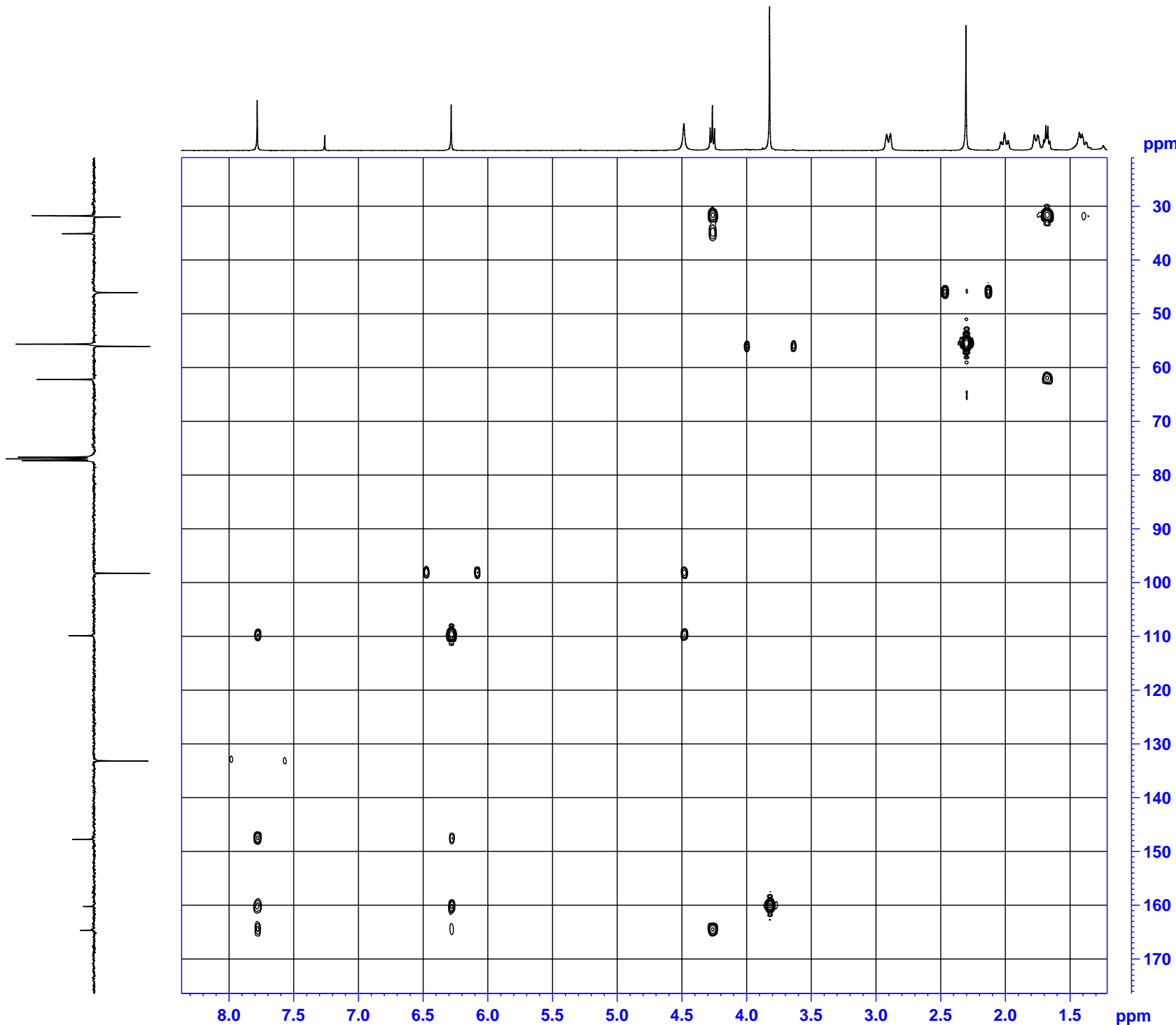
===== GRADIENT CHANNEL =====
 GPNAM1 SINE.100
 GPNAM2 SINE.100
 GPNAM3 SINE.100

GPX1 0.00 %
 GPX2 0.00 %
 GPX3 0.00 %
 GPY1 0.00 %
 GPY2 0.00 %
 GPY3 0.00 %
 GPZ1 50.00 %
 GPZ2 30.00 %
 GPZ3 40.10 %
 P16 1500.00 usec

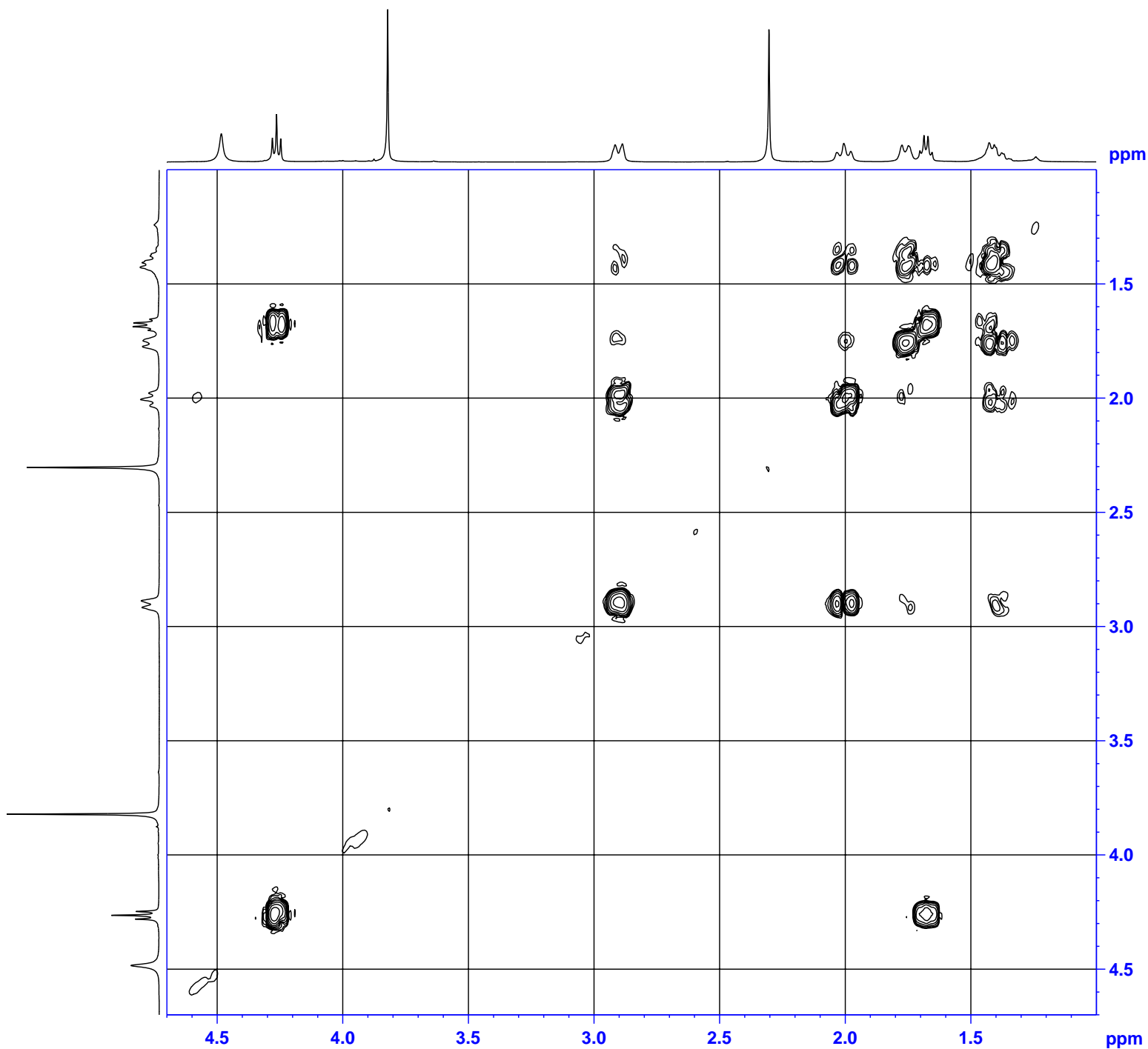
F1 - Acquisition parameters
 ND0 2
 TD 128
 SFO1 100.6238 MHz
 FIDRES 180.844910 Hz
 SW 230.046 ppm
 FhMODE QF

F2 - Processing parameters
 SI 1024
 SF 400.1300094 MHz
 WDW SINE
 SSB 0
 LB 0.00 Hz
 GB 0
 PC 1.40

F1 - Processing parameters
 SI 1024
 MC2



jls2295 COSY



Current Data Parameters
 NAME jls2295
 EXPNO 11
 PROCNO 1

F2 - Acquisition Parameters
 Date_ 20070427
 Time 10.29
 INSTRUM spect
 PROBHD 5 mm BBI 1H-BB
 PULPROG cosygpmfqf
 TD 1024
 SOLVENT CDCl3
 NS 1
 DS 16
 SWH 3360.215 Hz
 FIDRES 3.281460 Hz
 AQ 0.1525700 sec
 RG 16384
 DW 148.800 usec
 DE 6.50 usec
 TE 300.0 K
 d0 0.00000300 sec
 D1 1.99856603 sec
 d13 0.00000400 sec
 D16 0.00010000 sec
 IN0 0.00029760 sec
 MCREST 0.00000000 sec
 MCWRK 1.99856603 sec

==== CHANNEL f1 =====
 NUC1 1H
 P1 6.20 usec
 PL1 -1.00 dB
 SFO1 400.1317373 MHz

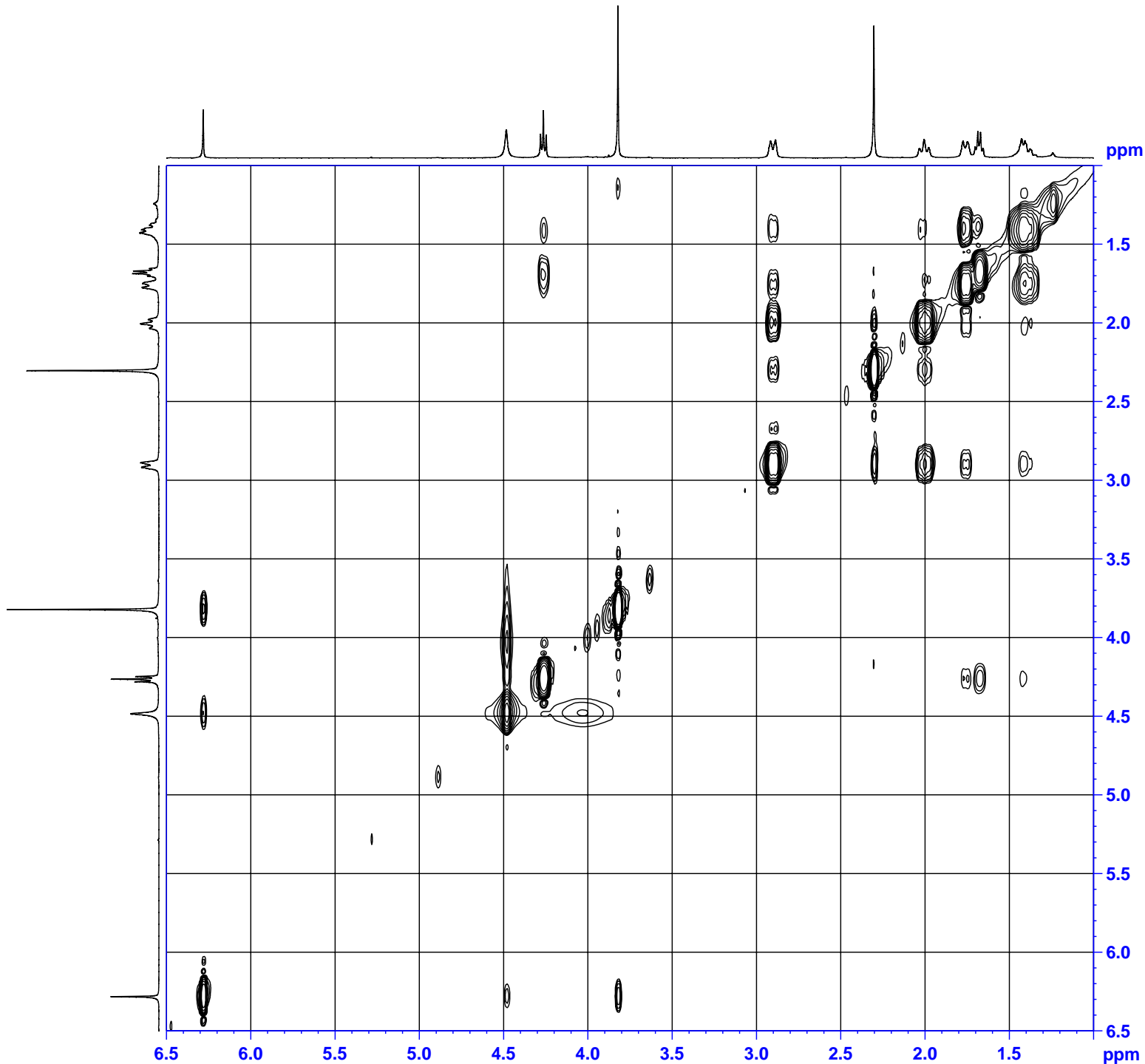
==== GRADIENT CHANNEL =====
 GPNAM1 SINE.100
 GPNAM2 SINE.100
 GPNAM3 SINE.100
 GPX1 0.00 %
 GPX2 0.00 %
 GPX3 0.00 %
 GPY1 0.00 %
 GPY2 0.00 %
 GPY3 0.00 %
 GPZ1 16.00 %
 GPZ2 12.00 %
 GPZ3 40.00 %
 P16 1500.00 usec

F1 - Acquisition parameters
 ND0 1
 TD 128
 SFO1 400.1317 MHz
 FIDRES 26.251680 Hz
 SW 8.398 ppm
 FhMODE QF

F2 - Processing parameters
 SI 1024
 SF 400.1300094 MHz
 WDW SINE
 SSB 0
 LB 0.00 Hz
 GB 0
 PC 1.40

F1 - Processing parameters
 SI 1024
 MC2 QF
 SF 400.1300094 MHz
 WDW SINE
 SSB 0
 LB 0.00 Hz
 GB 0

jls2295 NOESY



Current Data Parameters
NAME jls2295
EXPNO 14
PROCNO 1

F2 - Acquisition Parameters
Date_ 20070427
Time 10.57
INSTRUM spect
PROBHD 5 mm BBI 1H-BB
PULPROG noesygpph
TD 1024
SOLVENT CDCl3
NS 2
DS 16
SWH 3360.215 Hz
FIDRES 3.281460 Hz
AQ 0.1525700 sec
RG 724.1
DW 148.800 usec
DE 6.50 usec
TE 300.0 K
d0 0.00000300 sec
D1 0.99979478 sec
D8 0.80000001 sec
D16 0.00010000 sec
d20 0.39840001 sec
IN0 0.00029760 sec
MCREST 0.00000000 sec
MCWRK 0.99979478 sec

==== CHANNEL f1 =====
NUC1 1H
P1 6.20 usec
P2 12.40 usec
PL1 -1.00 dB
SFO1 400.1317373 MHz

==== GRADIENT CHANNEL =====
GPNAM1 SINE.100
GPNAM2 SINE.100
GPX1 0.00 %
GPX2 0.00 %
GPY1 0.00 %
GPY2 0.00 %
GPZ1 40.00 %
GPZ2 -40.00 %
P16 1500.00 usec

F1 - Acquisition parameters
ND0 1
TD 128
SFO1 400.1317 MHz
FIDRES 26.251680 Hz
SW 8.398 ppm
FnMODE TPPI

F2 - Processing parameters
SI 1024
SF 400.1300094 MHz
WDW QSINE
SSB 2
LB 0.00 Hz
GB 0
PC 1.00

F1 - Processing parameters
SI 1024
MC2 TPPI
SF 400.1300094 MHz
WDW QSINE
SSB 2
LB 0.00 Hz
GB 0